

# **FILL-RITE DEF** TM



**DEF / ADBLUE<sup>®</sup>**  
**PUMP SYSTEMS & ACCESSORIES**  
**FROM THE LEADER IN FUEL TRANSFER**

**Tuthill**  
PUMP YOUR HEART INTO IT



## *DF Series | DEF Dispensing Pump Systems*

The new DF Series DEF pumps and systems from Fill-Rite provide quick, easy, and safe dispensing. With 8 GPM flow rates, your choice of AC or DC power, and all-in-one systems ready to go right out of the box, pumping Diesel Exhaust Fluid has never been easier.

Whether you pump from an IBC, tote, or drum, there is a DF series system for you.

Options include mounting brackets, hoses, fittings, and nozzles with digital meters pre-attached at the factory. Best of all, it comes from Fill-Rite, so you know it is built for performance and durability. Take control of your DEF use; choose a DF Series system from Fill-Rite, the most trusted name in pumps and meters.



## Pump Features & Benefits

- **Rugged Multi-Diaphragm Technology**  
- Specifically designed for DEF / AdBlue® dispensing
- **Integral Pulsation Dampener** -  
Smooth flow at point of use

- **30-Minute Duty Cycle** -  
120V AC or 12V DC
- **Self-Priming to 6 Feet** - Saves time  
with quick fluid lift
- **8 GPM Flow Rate** - Ideal dispense  
rate for most tank sizes

- **EPDM Seals** - Designed, tested and  
proven specifically for DEF
- **Stainless Steel Exterior Hardware** -  
Ideal material for DEF / AdBlue®

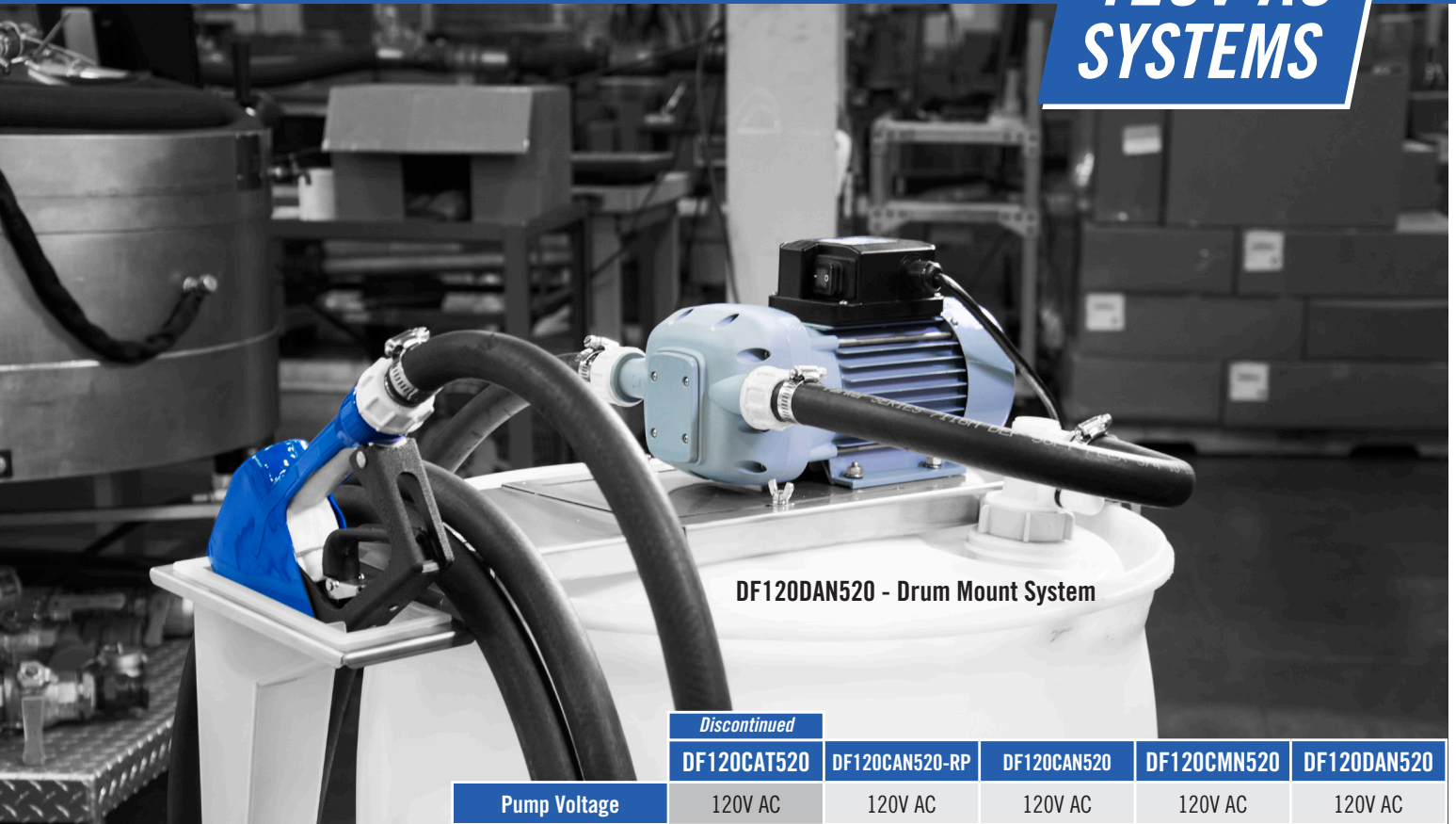
**120V AC**  
**DF120N**



	DF120N	DF012N
Flow Rate	8 gpm / 30 lpm	
Max. Bypass	38 psi / 2.6 bar	
Voltage	120V AC	12V DC
Wetted Construction	Nylon, EPDM, Santoprene®, Stainless Steel	
Duty Cycle	30 Min. ON / 30 Min. OFF	
Compatible Fluids	Water, Diesel Exhaust Fluid	
Inlet / Outlet	1" BSPP	
Connections Kit (included)	(2) 1" BSPP x 3/4" hose barb 90° elbows, (2) 1" BSPP x 3/4" hose barb straight fittings, (4) Worm gear hose clamps	

**12V DC**  
**DF012N**

**2 YEAR WARRANTY**  
**ON ALL MODELS**



DF120DAN520 - Drum Mount System

	<i>Discontinued</i>				
	DF120CAT520	DF120CAN520-RP	DF120CAN520	DF120CMN520	DF120DAN520
Pump Voltage	120V AC	120V AC	120V AC	120V AC	120V AC
Bracket Type	Cage IBC	Cage IBC	Cage IBC	Cage IBC	Drum
Nozzle Boot & Bracket	Included	Included	Included	Included	Included
Turbine Meter	TT10PB	-	-	-	-
Nozzle Type	Automatic	Automatic	Automatic	Manual	Automatic
Micro Matic® RPV	Included	Included	-	-	-
5' Suction Hose	Included	Included	Included	Included	Included
20' Discharge Hose	Included	Included	Included	Included	Included
Connections	(2) 1" BSPP x 3/4" hose barb 90° elbows, (2) 1" BSPP x 3/4" hose barb straight fittings, (4) Worm gear hose clamps				

DF120CAN520-RP



Automatic Nozzle AC System, RPV

DF120CAN520



Automatic Nozzle AC System

DF120CMN520



Manual Nozzle AC System

DF120DAN520



Drum Mount AC System, Auto Nozzle

### System Component Details

#### Cage Bracket

- Stainless steel
- Hangs on many types of caged totes
- High capacity hose bracket accommodates 20'

#### Drum Bracket (DF120DAN520 only)

- Stainless steel
- Securely mounts to 30 and 55-gallon drums

# 12V DC SYSTEMS



DF012CAN520-RP



Automatic Nozzle DC System, RPV

	<i>Discontinued</i>			
	DF012CAT520	DF012CAN520-RP	DF012CAN520	DF012CMN520
<b>Pump Voltage</b>	12V DC	12V DC	12V DC	12V DC
<b>Bracket Type</b>	Cage IBC	Cage IBC	Cage IBC	Cage IBC
<b>Nozzle Boot &amp; Bracket</b>	Included	Included	Included	Included
<b>Turbine Meter</b>	TT10PB			-
<b>Nozzle Type</b>	Automatic	Automatic	Automatic	Manual
<b>Micro Matic® RPV</b>	Included	-	Included	-
<b>5' Suction Hose</b>	Included	Included	Included	Included
<b>20' Discharge Hose</b>	Included	Included	Included	Included
<b>Connections</b>	(2) 1" BSP x 3/4" hose barb 90° elbows, (2) 1" BSP x 3/4" hose barb straight fittings, (4) Worm gear hose clamps			

DF012CAN520



Automatic Nozzle DC System

DF012CMN520



Manual Nozzle DC System

## Nozzle Boot

- Keeps nozzle clean and free of debris
- Nozzle tip submerged in water stays clean
- Removable boot for easy clean-up
- Multiple secure mounting configurations

## Hose

- 3/4" EPDM DEF rated

## Nozzle

- Automatic or manual

## Micro Matic® Composite Dispense Coupler (RPV)

(CAT520 and CAN520-RP models only)

- Dispense from drum or IBC
- For use with either RSV or RPV 4-Key Container Valve
- Fast "Turn, Click and Go" connections
- Self-locking handle eliminates accidental disengagement
- Protects fluid purity by allowing dispense only

# FILL-RITE DEF™

## DF Series | DEF Accessories



### FRDFA075A

- Automatic DEF nozzle
- Stainless Steel
- 3/4" BSP connection



Discontinued

### KITDFMN

- DEF Automatic metering nozzle
- In-line turbine meter
- 3/4" SS Hose barb connection w/ swivel



### FRDFM075C

- Manual DEF nozzle
- Non-metallic
- 3/4" Hose barb connection



### FRDFM075B

- Automatic DEF nozzle
- Non-metallic
- 3/4" SS Hose barb connection w/ swivel



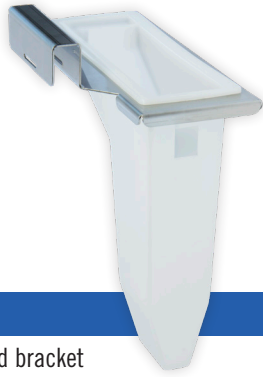
### KITDFCB

- FILL-RITE IBC/Tote bracket
- Stainless Steel construction including hardware
- Includes nozzle boot and reservoir



### KITDFDB

- FILL-RITE Drum bracket
- Stainless Steel construction expands for 30 to 55 gallon drums
- Includes nozzle boot and bracket



### KITDFNB

- Nozzle boot and bracket
- Removable boot for easy clean-up
- Keeps nozzle clean and free of debris



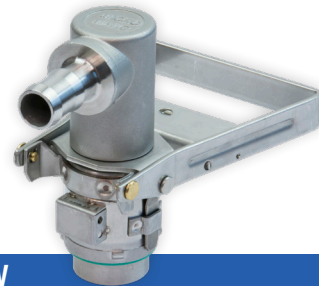
### MMSS075EPV

- Micro Matic® Stainless Steel, EPV coupler
- 3/4" Horizontal hose barb connection
- For use with 3-key EPV container valves



### MMNM075RPV

- Micro Matic® Non-metallic, RPV coupler
- 3/4" Horizontal hose barb connection
- For use with either RSV or RPV 4-key container valves



### MMSS075RSV

- Micro Matic® Stainless Steel, RSV coupler
- 3/4" Horizontal hose barb connection
- For use with either RSV or RPV 4-key container valves



### KIT180DTPS

- 55 Gallon drum drop tube
- 3/4" Horizontal hose barb connection
- Vented system



### KITDFH20

- 20' EPDM suction hose 3/4 inch
- Bare ends for hose barb connection
- DEF rated



### KITDFH05

- 5' EPDM suction hose 3/4 inch
- Bare ends for hose barb connection
- DEF rated



### KITDFFK

- (2) 1" BSPP x 3/4" Hose Barb strait fittings with retaining nuts
- (2) 1" BSPP x 3/4" Hose Barb 90-degree elbow fittings with retaining nuts
- (4) SS worm gear hose clamps



# **FILL-RITE** DEF™

*[fillrite.com/def](http://fillrite.com/def)*

FRDEFBSB\_Rev2

 **Tuthill**  
PUMP YOUR HEART INTO IT

8825 Aviation Drive  
Fort Wayne, Indiana 46809  
(800) 634-2695 or (260) 747-7524  
UK +44 115 944 6774

RECOGNIZED  
COMPONENT



Intertek

3067171

Conforms To UL Std. 1004-1  
Certified to CAN/CSA Std. C22.2#100